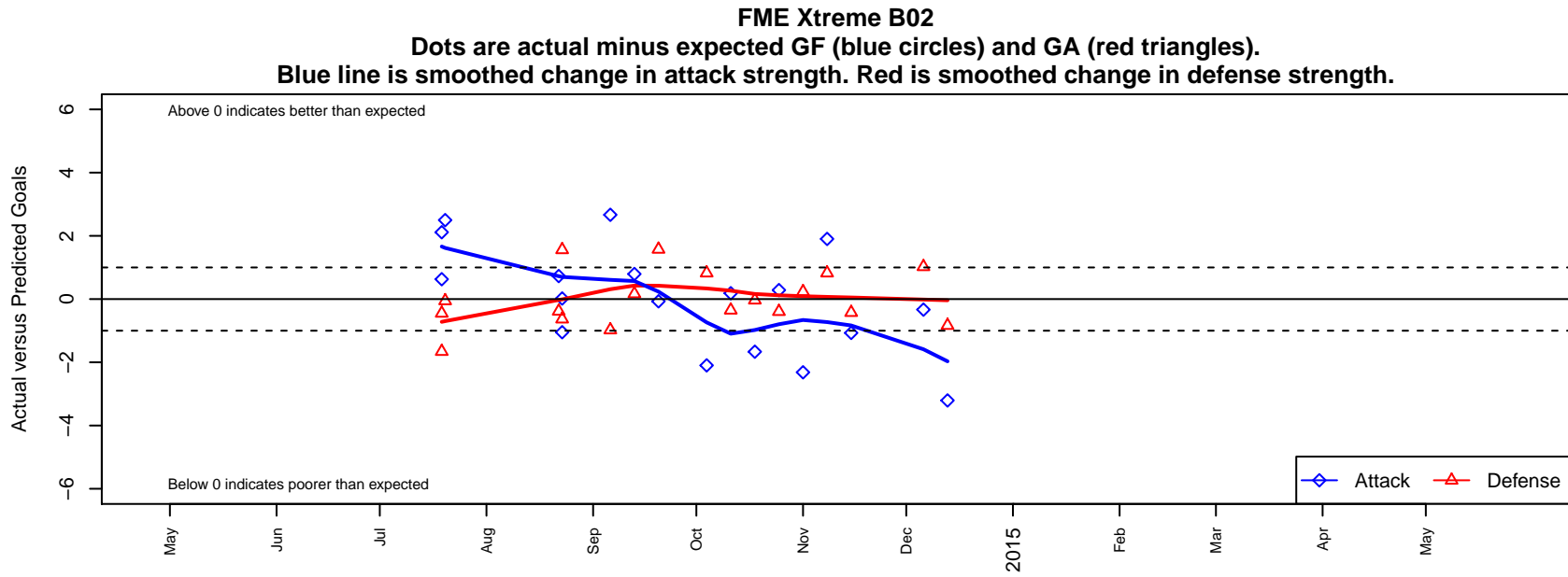


# FME Xtreme B02

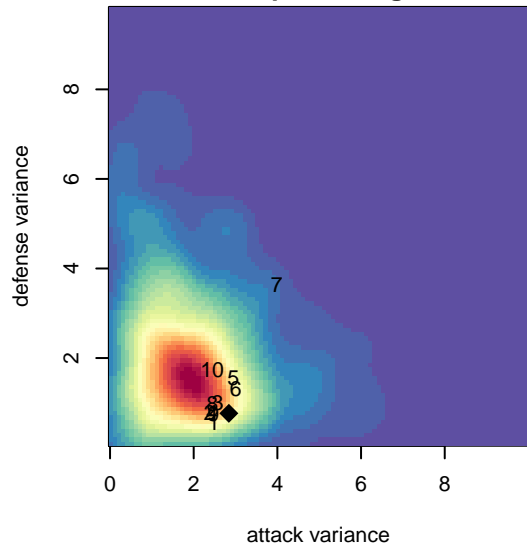
Fife Milton Edgewood SC  
Milton, WA  
B02 total strength=414  
attack=0.5 defense=0.14  
fall league = NPSL B12D3

alt names used:  
FME Xtreme B02  
FME Xtreme

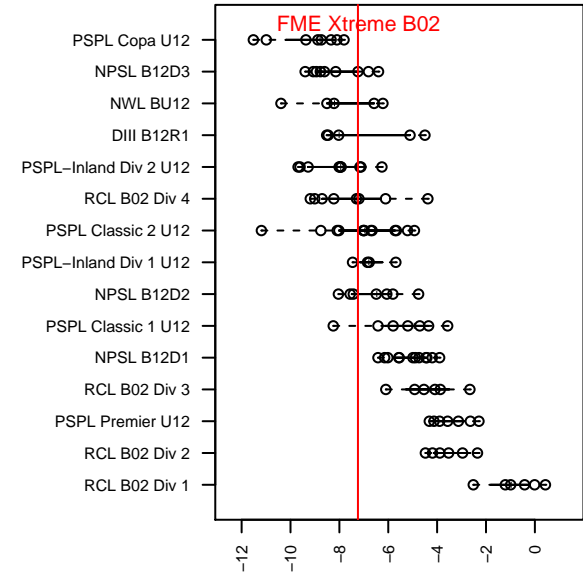
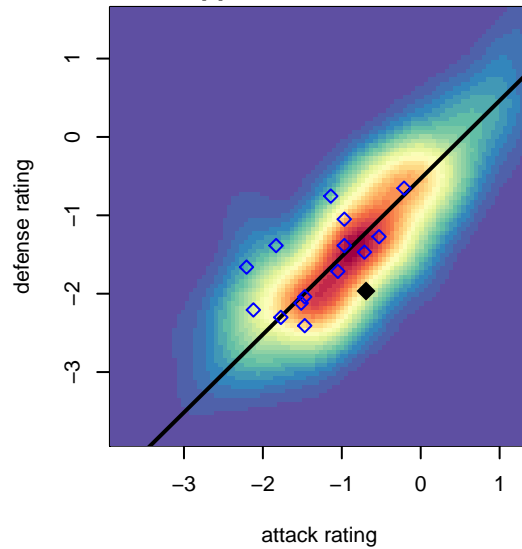
Venues played:  
2014 KITG BU12-13 Green  
2014 Xtreme Cup BU12  
2014 NPSL B12D3



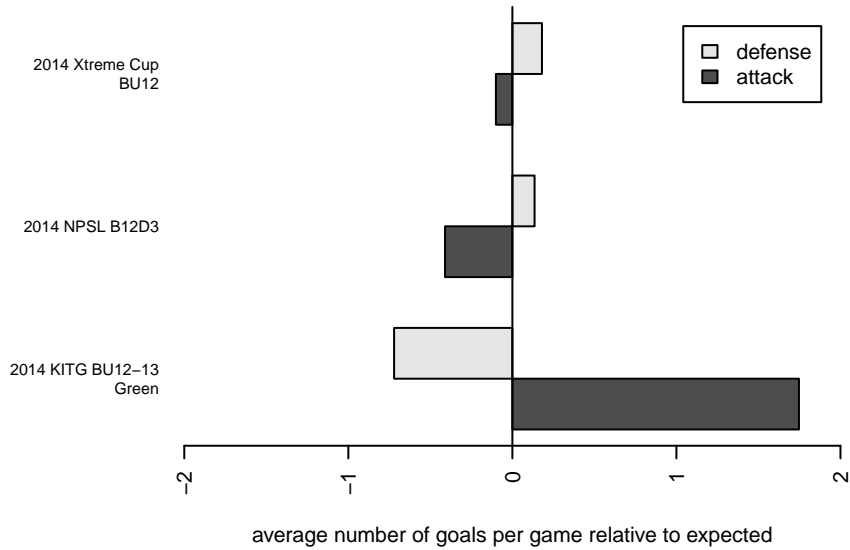
**attack and defense variance (black dot)  
relative to other teams  
and top 10 in region**



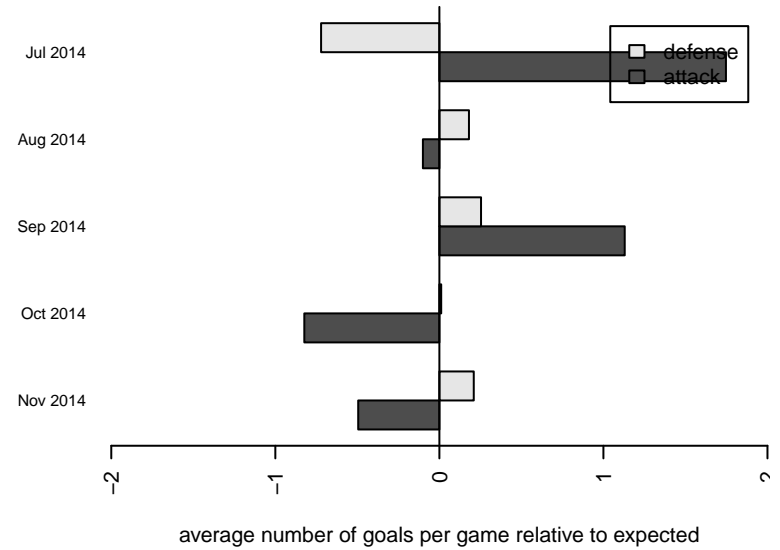
**attack and defense rating  
relative to others at age  
and all opponents in last 13 months**



**Performance relative to 13 month average**



**Performance relative to 13 month average**



<b>date</b>	<b>home</b>		<b>away</b>		<b>venue</b>	<b>pred.home</b>	<b>pred.away</b>
2014-12-13	BIFC White B02	2	FME Xtreme B02	2	2014 NPSL B12D3	1.16	5.21
2014-12-06	FME Xtreme B02	3	Mercer Island FC Strikers B02	0	2014 NPSL B12D3	3.33	1.02
2014-11-15	Seattle United NE White B02	2	FME Xtreme B02	3	2014 NPSL B12D3	1.57	4.07
2014-11-08	FME Xtreme B02	4	Silver Lake Bombers B02	2	2014 NPSL B12D3	2.10	2.82
2014-11-01	FME Xtreme B02	0	Newport FC Predator B02	1	2014 NPSL B12D3	2.32	1.23
2014-10-25	Real Everett B02	2	FME Xtreme B02	6	2014 NPSL B12D3	1.60	5.72
2014-10-18	WS Wildcats B02	3	FME Xtreme B02	0	2014 NPSL B12D3	2.97	1.66
2014-10-11	FME Xtreme B02	5	BYSC Select B02	2	2014 NPSL B12D3	4.82	1.65
2014-10-04	Silver Lake Bombers B02	2	FME Xtreme B02	0	2014 NPSL B12D3	2.82	2.10
2014-09-20	FME Xtreme B02	4	Seattle United NE White B02	0	2014 NPSL B12D3	4.07	1.57
2014-09-13	FME Xtreme B02	6	BIFC White B02	1	2014 NPSL B12D3	5.21	1.16
2014-09-06	Mercer Island FC Strikers B02	2	FME Xtreme B02	6	2014 NPSL B12D3	1.02	3.33
2014-08-23	Newport FC Supernova B02	5	FME Xtreme B02	1	2014 Xtreme Cup BU12	4.37	2.05
2014-08-23	Seattle United Shoreline Blue B02	4	FME Xtreme B02	1	2014 Xtreme Cup BU12	5.56	0.98
2014-08-22	FME Xtreme B02	4	Mukilteo Rush B02	3	2014 Xtreme Cup BU12	3.27	2.61
2014-07-20	FME Xtreme B02	7	FPSC Mighty Dragons B02	1	2014 KITG BU12-13 Green	4.50	0.94
2014-07-19	FME Xtreme B02	3	TC United B02	4	2014 KITG BU12-13 Green	2.37	3.55
2014-07-19	FME Xtreme B02	3	FWFC White B01	5	2014 KITG BU12-13 Green	0.89	3.34